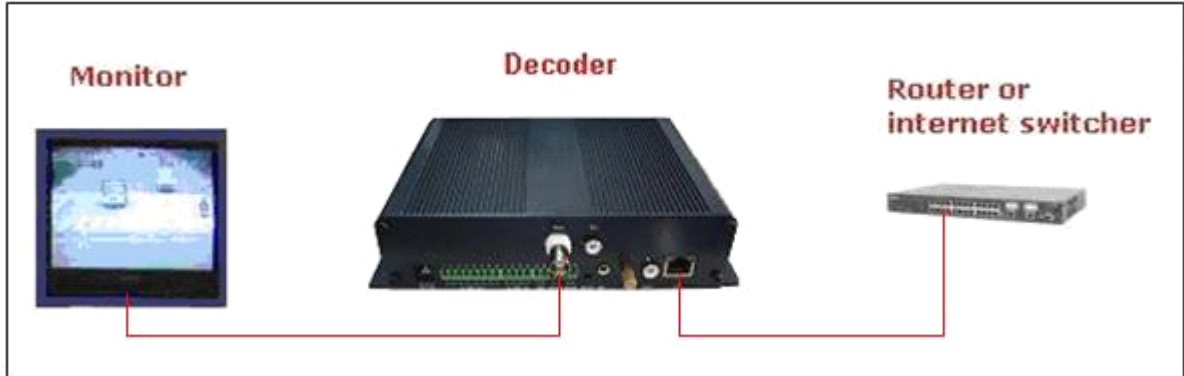


Decoder User Manual (Brief Steps)

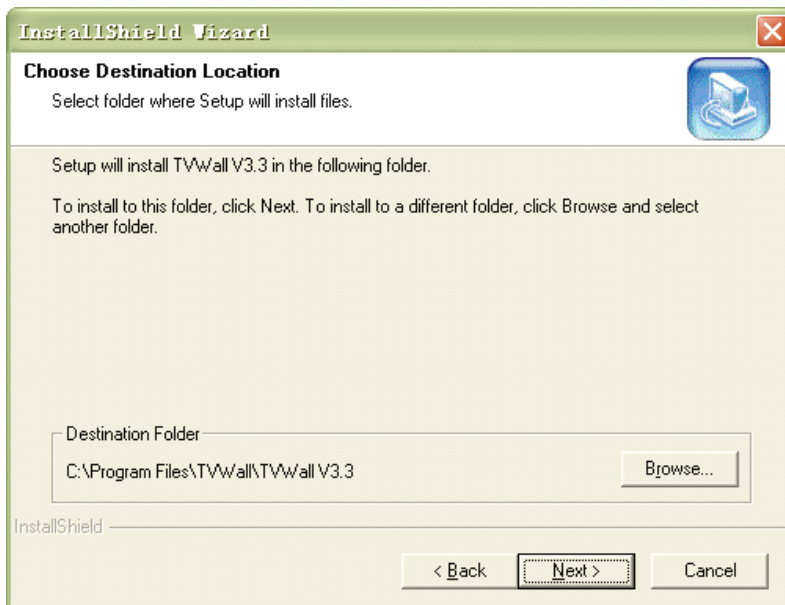
Connection



Via TV-Wall software to control decoder to output video to TV-Wall as follows:

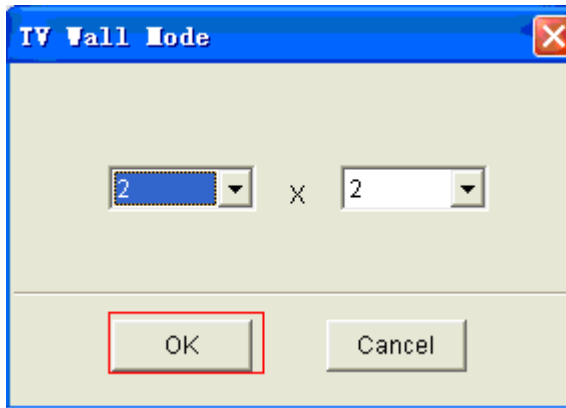
Note: Decoder indicate network video server device.

1: Install the TV-Wall Software:

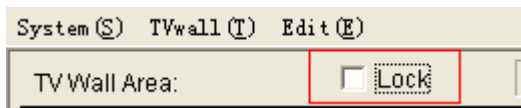


2 : Set the Display Mode for TV-Wall Software

Choose **【TV-Wall】** —— **【TV Wall Mode】** menu:



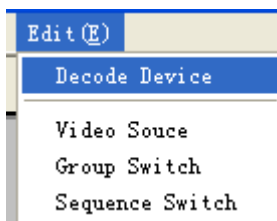
3 : Lock the TV-Wall Display Mode:

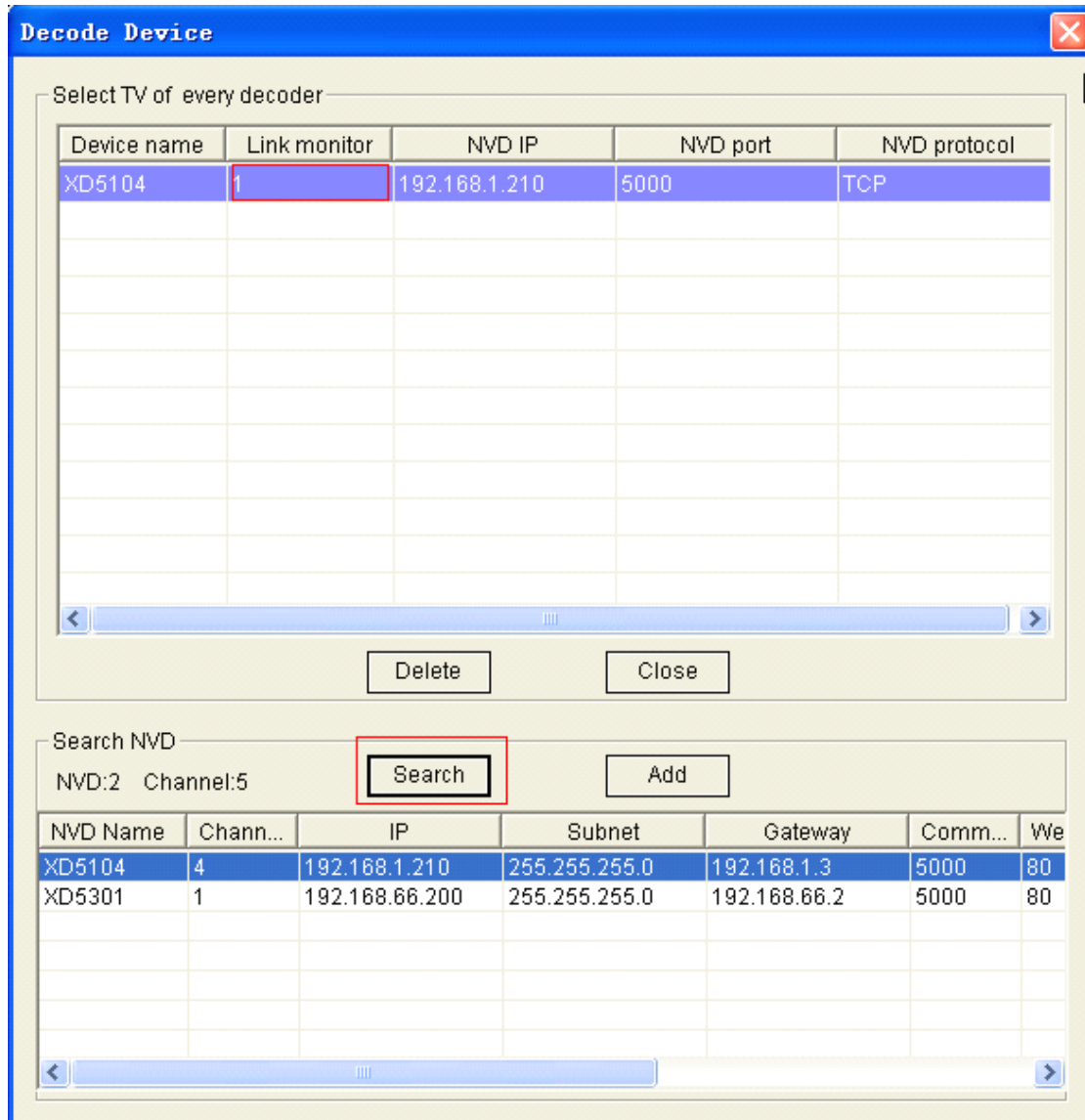


It will remind you to restart after you lock the TV-Wall Display Mode.

4: Add decoder device:

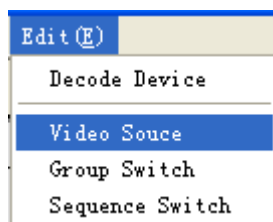
Choose **【Edit】** —— **【Decode Device】** menu:

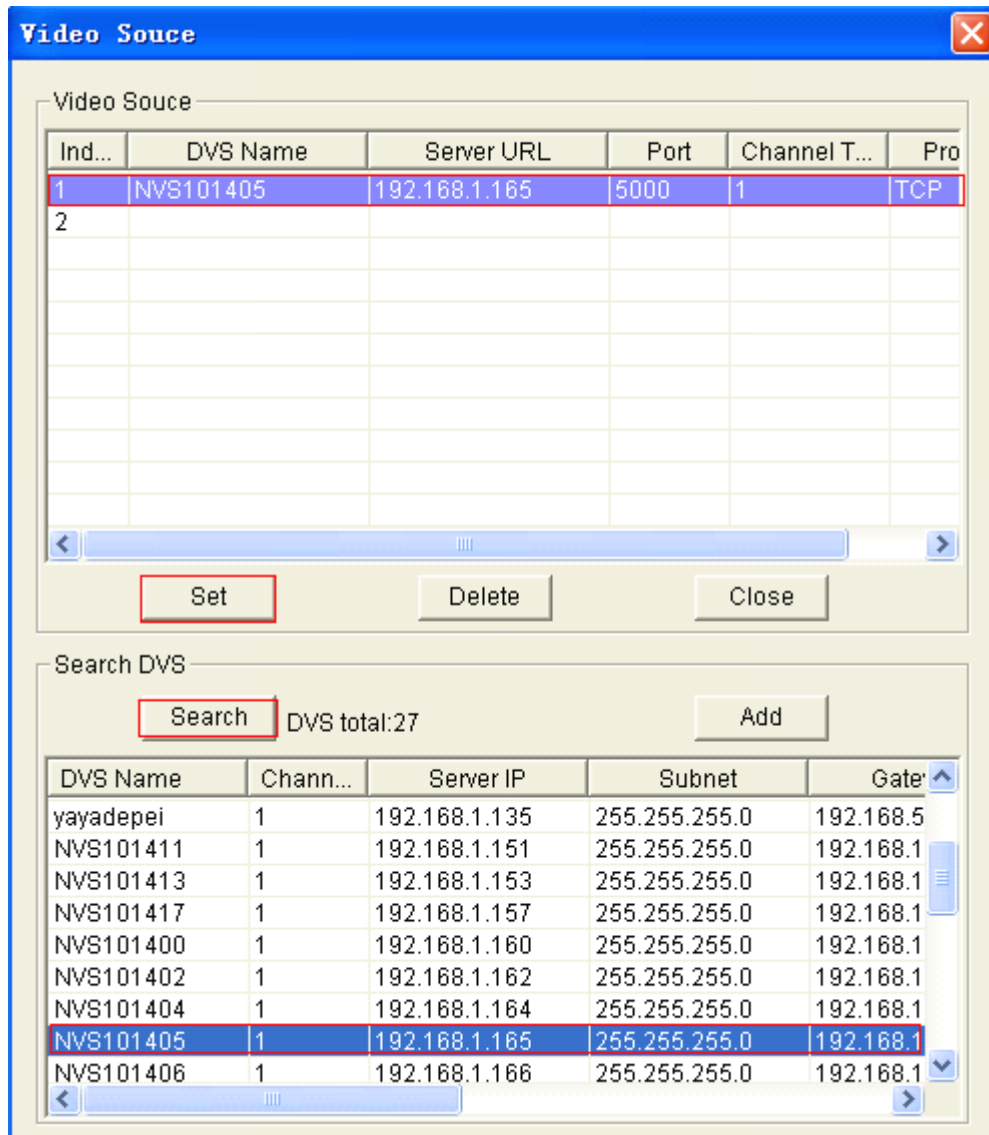




- A. Searching decode device, add the device to the system.
- B. Related decode device with monitor, choose decode device first, then choose monitor.
- C. Save and close the current settings at last.

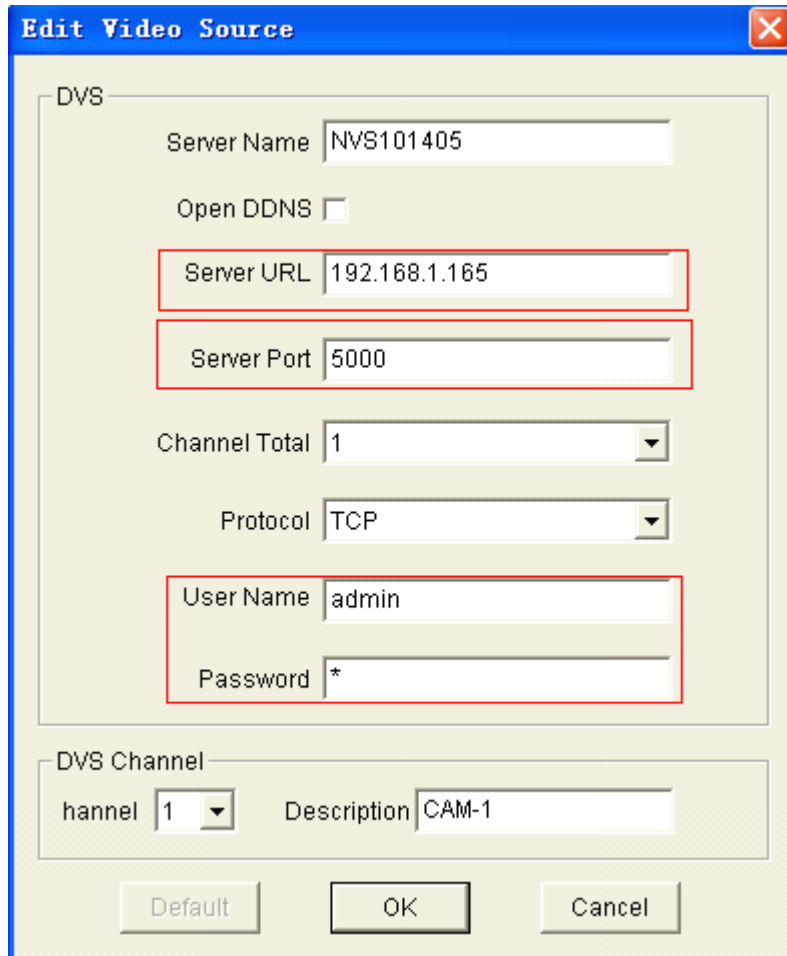
5: Add the video source (Encoder) management





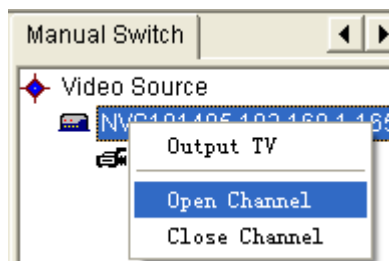
- A. Searching the video server device, add the device to the system.
- B. Double-click the last line to add the video server device by manually.
- C. Save and close the current settings at last.

Please confirm to add the encoder IP address, web port, user name and password correctly:

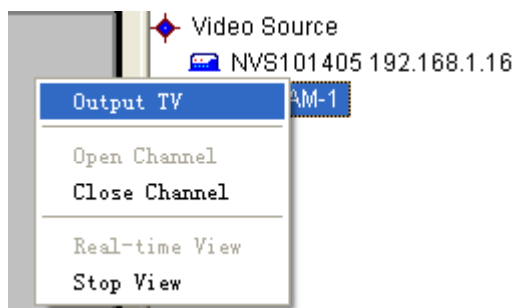


6: Output the video on TV-Wall Software:

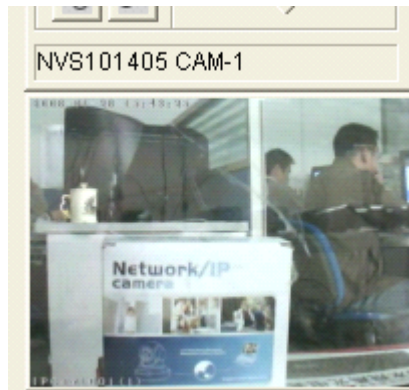
Choose the connected video manually in the Manual Switch:



Please operate as follows if you output video to TV-Wall Manually:



If you want to view the image on the TV-Wall Software, double-click the channel name of the encoder:

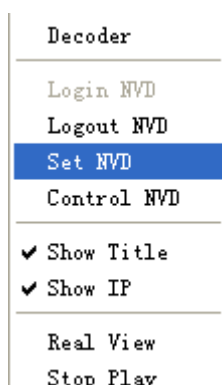


7: Output the video to Monitor

Click the right button to login NVD



Set NVD



Display the information of encoder.

Set NVD Parameters

System | Network | Alarm Output | User | Alarm Info | DVS Info | **Single Connect** | Loop Connect

Name 2

URL 176192.168.1.165

Port 5000

Channel All

Protocol TCP

UserName admin

Password 3

Talk-back

Auto Reconnect

Save

Fill in the encoder IP address, web port, user name and password on the TV-wall

Recommend to choose it

